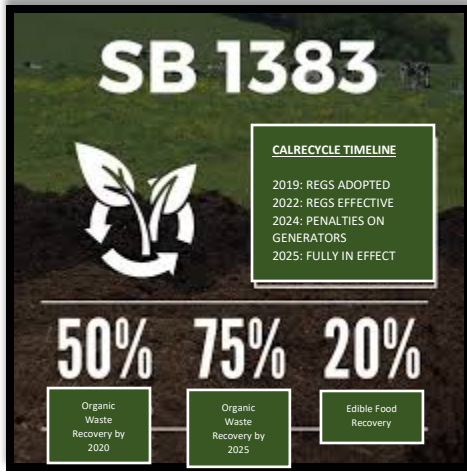




SB 1383: California Organics Law

WHAT IS SB 1383?



SB 1383 is a statewide effort to reduce emissions of short-lived climate pollutants (SLCP). Specifically, the law sets the following targets:

Reduce statewide disposal of organic waste by 50% by January 1, 2020, and by 75% by January 1, 2025 (based on 2014 levels).

Rescue at least 20% of currently disposed of edible food for human consumption by 2025.

CalRecycle is the state agency responsible for creating the regulatory standards for SB 1383. The final regulations for SB 1383 can be found here:

<https://www.calrecycle.ca.gov/organics/slcp>

Effective January 1st, 2022: CalRecycle’s regulations to meet statewide organics reduction and food recovery requirements take effect. Enforcement provisions, including penalties for noncompliance issued by the state, also take effect.

Effective January 1st, 2024: Regulations may require local jurisdictions to impose penalties for noncompliance on regulated entities subject to their authority.

WHY SB 1383?

When compostable materials such as food scraps and paper products break down in a landfill, they become powerful contributors to greenhouse gas emissions. Compostable materials such as food waste and paper decompose anaerobically (without oxygen) in a landfill, producing methane (CH₄)—one of the most potent greenhouse gases in Earth’s atmosphere.

The intent of this organic’s diversion goal is to reduce these emissions in light of global climate change.



WHO DOES SB 1383 APPLY TO?

SB 1383 applies to all residents (single-family homes and apartments/condos) and businesses.

How does it impact me as a resident?

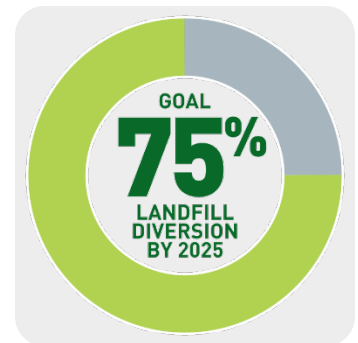


All residents living in single-family homes in Patterson are automatically provided curbside organics (compost/green cart) service. If you do not have compost service, please contact us at 209-895-8040 to set it up.

How does it impact me as a business?

If you own a business or apartment/condo complex (of five units or more), you are required to:

**Divert organic materials from the landfill by
Subscribing to and participating in the organics
collection service via the city of Patterson's hauler**



OR:

Self-haul organic waste to a specified composting facility, community composting program, or other collection activity or program.

You must verify your self-haul status by completing a SB1383 Compliance form. You can request your form by calling Patterson Public Works at 209-895-8060 or find it in your business license packet. **If you do not contact the city to verify your self-haul status you will be auto enrolled into the city's recycling program in 2022. (Additional charges will apply.)**

Collection service must be arranged so that access to an adequate number, size, and location of containers with correct labels is available. To arrange service contact 209-895-8040

Provide collection containers for organic waste and recyclables to employees, contractors, tenants, and customers

STATE MANDATED BIN COLORS



Recycle—Blue

Paper products, empty plastic containers, bottles and aluminum cans



Organic Waste—Green

Food waste, green waste, paper waste



Trash—Grey*

Non-recyclable waste and mixed material

* Black is also acceptable

Provide indoor containers for organic waste and recyclables in all areas where disposal containers are provided for customers, except in restrooms (multi-family dwellings are exempt).

For all outdoor and indoor containers, the container bodies or lids shall conform to the following color scheme: gray/black for garbage, blue for recycling, and green for organics. In addition, containers shall have labels with graphic images to indicate primary materials accepted and prohibited.



Annually provide educational information to employees about the legal requirements to compost and recycle including how to properly sort between the three waste streams.



For the recovery of edible food waste, edible food generators are split into two tiers and must arrange to recover the maximum amount of their edible food that would otherwise go to landfills and maintain records. Records to include a list of food recovery organizations that collect or receive your edible food, a copy of all contracts and written agreements, the type of food, the frequency that food will be collected, the monthly quantity of food by weight.

Local Food Recover Organization:

The Well Community Fellowship Church – Food Pantry

Modesto, CA - 95355
(209) 551-4463
Food Pantry Location: 18.30 miles from Patterson

Tracy Interfaith Ministries

Tracy, CA - 95376
(209) 836-5424
Food Pantry Location: 25.36 miles from Patterson

Westside Food Pantry

Patterson, CA – 95363
(209) 892-5709
850 N. Second Street Patterson, CA

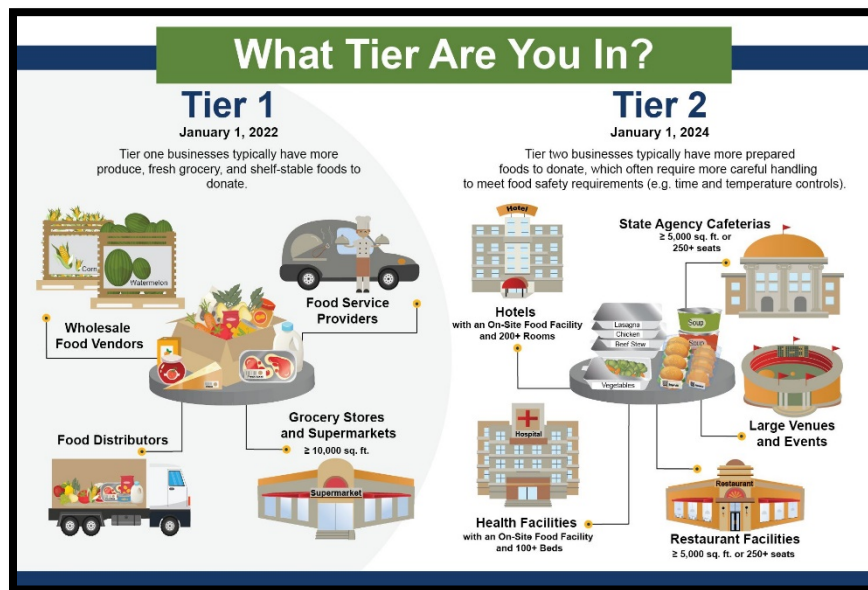
**Tier One must comply with edible food recovery requirements by Jan. 1st, 2022.
This includes:**

Supermarkets

Grocery stores (with a total facility size $\geq 7,500$ sq. ft.)

Food service distributors

Wholesale food markets



**Tier Two must comply with edible food recovery requirements by Jan. 1st, 2024.
This includes:**

Restaurants (with ≥ 250 seats, or $\geq 5,000$ sq. ft.)

Hotels (with onsite food facility and ≥ 200 rooms),

Health facilities (with onsite food facility and ≥ 100 beds),

State agencies (with a cafeteria with ≥ 250 seats, or $\geq 5,000$ sq. ft)

Local education agencies (with an onsite food facility)

Large venues

Large events

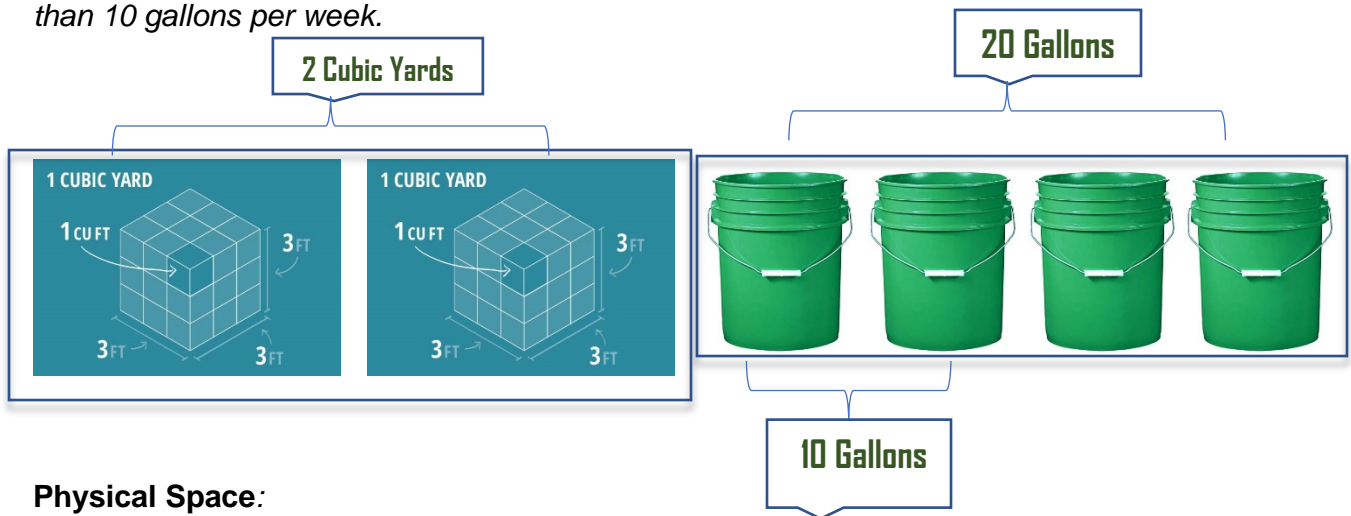
**Commercial businesses may be granted a waiver by a jurisdiction and thus exempted from some or all requirements if they can provide documentation and evidence to support one of the following:*

EXEMPTIONS

De Minimus Waivers:

Total solid waste collection is more than two cubic yards per week and organic waste is less than 20 gallons per week.

Total solid waste collection is less than two cubic yards per week and organic waste is less than 10 gallons per week.



Physical Space:

premises lack adequate space for all three waste streams (recycling, landfill, and organics).

To see if your entity qualifies for an exemption you can schedule a consultation by emailing solidwaste@pattersonca.gov or contacting Patterson Public Works at (209) 895-8060.



If you have questions or would like more information, contact Patterson Public Works at 209-895-8060 or email solidwaste@pattersonca.gov